

PBB 系列大型数控折弯机

Series CNC Sheetmetal Pressbrake



- ▼ 流线型设计，高速度、高精度、高刚性的数控板料折弯机
- ▼ 电液伺服系统，全闭环控制滑块同步
- ▼ 工作台液压挠度补偿和喉口变形补偿机构，确保折弯精度
- ▼ 后挡料采用数字式交流伺服电机驱动，精密滚珠丝杠传动，直线导轨导向
- ▼ CNC sheetmetal pressbrake with streamlined design, high speed, high precision and high rigidity
- ▼ Electro hydraulic servo system, full loop controlling the synchronization of the upperbeam
- ▼ Equip with hydraulic crowning compensation on worktable and deformation compensation device on throat, to make sure bending depth and precision
- ▼ Backgauge is driven by digital AC servo motor, moved by precision ball screw, guided by linear guide

标准配置

- ▼ 荷兰DELEM DA56/瑞士CYBELEC DNC 880S
- ▼ 德国全闭环电液伺服同步控制系统
- ▼ 后挡料前后运动X轴，挡指可沿燕尾导轨移动
- ▼ 直联型夹紧上模 / 机械斜楔夹紧欧式上模
- ▼ 多-V宽工作台下模
- ▼ 前托料位置可沿工作台按步距调节
(可选配加长前托料/前推料装置)

Standard configuration

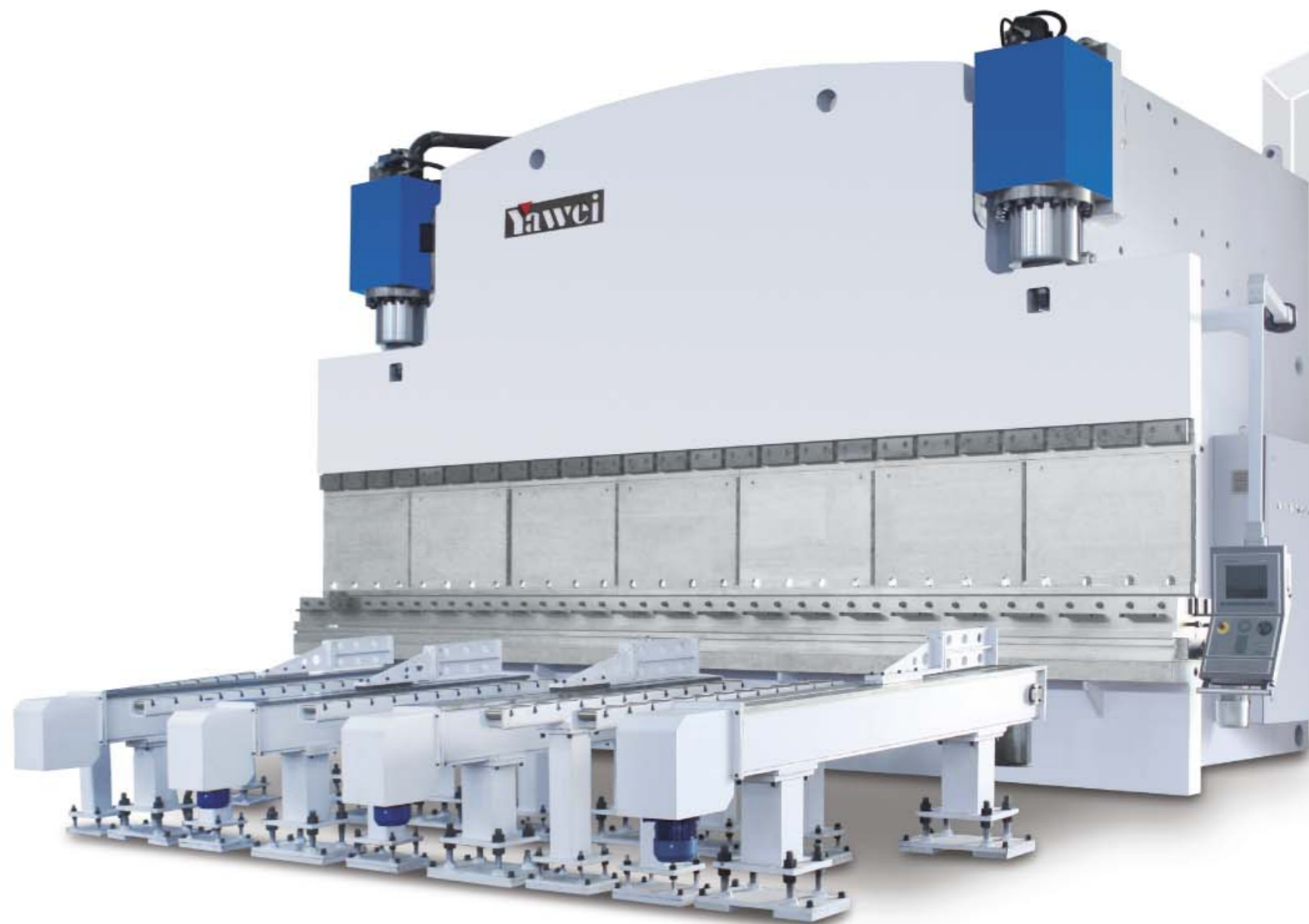
- ▼ Adopt DELEM DA56 from the Netherlands, or Cybelec 880S from Swiss
- ▼ Full loop electro-hydraulic servo synchronized control system from Germany
- ▼ X axis makes forward and backward movement of backgauge, the finger-stops can be moved with linear guide
- ▼ Adopt direct link clamp type top tooling, or European mechanical wedge clamping type top tooling
- ▼ Adopt mutil-V wide table type bottom tooling
- ▼ The position of front sheet support can be step adjusted along worktable
(Option: lengthened front sheet support/front feeding device)



PBA Series CNC Sheetmetal Pressbrake

- ▼ 流线型设计，高速度、高精度、高刚性的数控板料折弯机
- ▼ 电液伺服系统，全闭环控制滑块同步
- ▼ 工作台机械挠度补偿和喉口变形补偿机构，确保折弯精度
- ▼ 后挡料采用数字式交流伺服电机驱动，精密滚珠丝杠传动，直线导轨导向

- ▼ CNC sheetmetal pressbrake with streamlined design, high speed, high precision and high rigidity
- ▼ Electro hydraulic servo system, full loop controlling the synchronization of the upperbeam
- ▼ Equip with mechanical crowning compensation on worktable and deformation compensation device on throat, to make sure bending depth and precision
- ▼ Backgauge is driven by digital AC servo motor, moved by precision ball screw, guided by linear guide



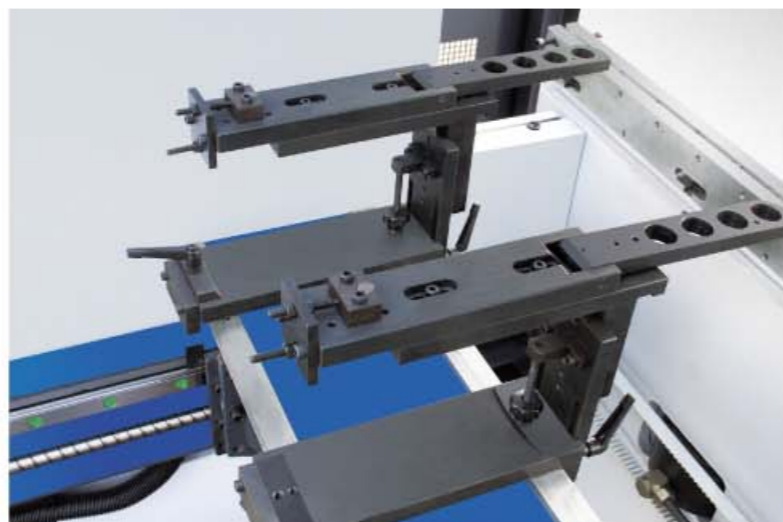
标准配置

- ▼ 荷兰DELEM DA56/瑞士CYBELEC DNC 880S
- ▼ 德国全闭环电液伺服同步控制系统
- ▼ 后挡料前后运动X轴，挡指可沿燕尾导轨移动
- ▼ 直联型夹紧上模 / 机械斜楔夹紧欧式上模
- ▼ 多-V宽工作台下模
- ▼ 前托料位置可沿工作台按步距调节
(可选配加长前托料/前推料装置)

Standard configuration

- ▼ Adopt DELEM DA56 from the Netherlands, or Cybelec 880S from Swiss
- ▼ Full loop electro-hydraulic servo synchronized control system from Germany
- ▼ X axis makes forward and backward movement of backgauge, the finger-stops can be moved with linear guide
- ▼ Adopt direct link clamp type top tooling, or European mechanical wedge clamping type top tooling
- ▼ Adopt multi-V wide table type bottom tooling
- ▼ The position of front sheet support can be step adjusted along worktable
(Option: lengthened front sheet support/front feeding device)

后挡料 Backgauge



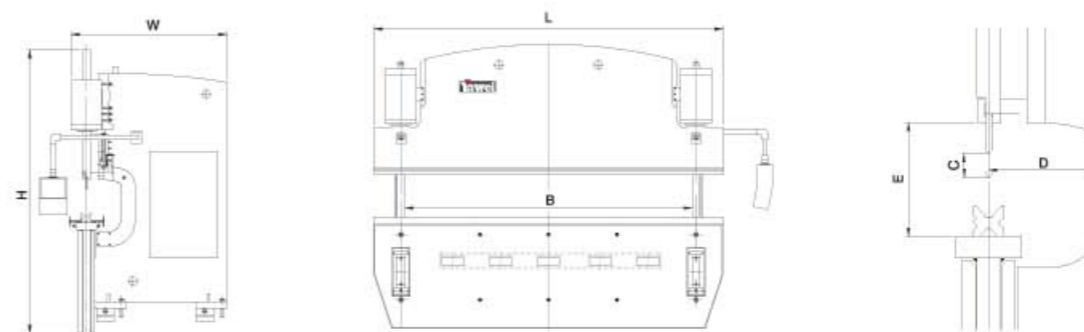
X



X-R(选配)



X-R 重型后挡料(选配)
X-R heavy type backgauge structure



PBB / PBA系列数控板料折弯机参数
Date of PBB / PBA series CNC sheetmetal pressbrake

型号 Specification	公称力 Nominal pressure	工作台长度 A Length of work table	立柱间距 B Distance between uprights	喉口 D Throat depth	滑块行程 C Ram stroke	最大开启高度 E Max day light	滑块速度 Ram speed			电机功率 Power of motor	油箱容积 Tank volume	外形尺寸 L×W×H Overall dimension	重量 Weight
	kN	mm	mm	mm	mm	mm	mm/s			kW	L	mm	kg
PBB-220/5100	2200	5100	4200	410	215	400	130	10	100	15	750	5400×1860×3380	23600
PBB-220/6200		6200	5100								800	6500×1850×3430	28000
PBB-300/5100	3000	5100	4200	410	265	500	120	10	100	22	800	5400×2000×3360	29000
PBB-300/6200		6200	5100								900	6500×2000×3360	35000
PBB(A)-400/4100	4000	4100	3200	510	315	520	110	9	100	30	1000	4400×2150×3600	31500(27500)
PBB(A)-400/5100		5100	4200								1050	5400×2160×4000	37800(32000)
PBB(A)-400/6200		6200	5100								1200	6500×2160×4000	46000(39000)
PBB(A)-500/4100	5000	4100	3200	510	315	520	110	9	100	37	1050	4400×2190×3700	38000(33000)
PBB(A)-500/5100		5100	4200								1200	5400×2290×4200	47000(40000)
PBB(A)-500/6200		6200	5100								1300	6500×2290×4500	56000(47000)
PBB(A)-500/8200		8200	6500								1300	8500×2290×5400	81000(64000)
PBB(A)-630/5100	6300	5100	4200	510	315	520	110	9	100	45	1200	5400×2430×4200	54000(46000)
PBB(A)-630/6200		6200	5100								1200	6500×2430×4500	65000(55000)
PBB(A)-630/8200		8200	6500								1500	8500×2430×4600	80600(68000)
PBB(A)-800/6200	8000	6200	5100	610	410	620	110	9	100	75	1500	6500×2990×5000	89000(74000)
PBB(A)-800/8200		8200	6500								1800	8500×2990×5400	110000(92000)
PBB(A)-800/10200		10200	8100								2200	10500×2990×6200	148000(126000)
PBB(A)-1000/6200	10000	6200	5100	610	410	620	110	9	100	90	1500	6500×2760×4800	96600(82000)
PBB(A)-1000/8200		8200	6500								2000	8500×2760×5300	124000(103000)
PBB(A)-1200/6200	12000	6200	5100	610	410	620	90	8	80	90	1600	6500×2940×5000	110000(94000)
PBB(A)-1200/8200		8200	6500								2100	8500×2940×5400	148000(130000)
PBB(A)-1200/12000		12000	9500								2500	12200×2940×6600	210000(168000)
PBB(A)-1600/8200	16000	8200	6500	610	410	720	90	8	80	2×55	2100	8500×3290×6700	194000(160000)
PBB(A)-1600/12000		12000	9500								2500	12200×3290×7700	280000(226000)
PBB(A)-2000/8200	20000	8200	6500	610	410	720	90	8	80	2×55	2100	8500×3540×7300	236000(195000)
PBB(A)-2000/12000		12000	9500								2500	12200×3540×8400	380000(305000)
PBB(A)-2500/12000	25000	12000	9500	610	410	720	90	8	80	2×75	3000	12200×3590×8500	456000(336000)
PBB(A)-3000/12000	30000	12000	9500	610	410	720	90	8	80	2×75	3500	12200×3740×8800	550000(465000)

可专门设计制造特殊参数规格的产品
We can design and manufacture production of special order

2-PBA

2-PBA双机联动钢管杆数控折弯机

2-PBA Andem CNC Steel Pole Pressbrake



Yawei 亚威

2-PBA双机联动钢管杆数控折弯机

2-PBA Andem CNC Steel Pole Pressbrake



棱形上模、可调式槽型下模
Prismatic top tooling, adjustable slotted bottom tooling



前推料
X type front feeding device



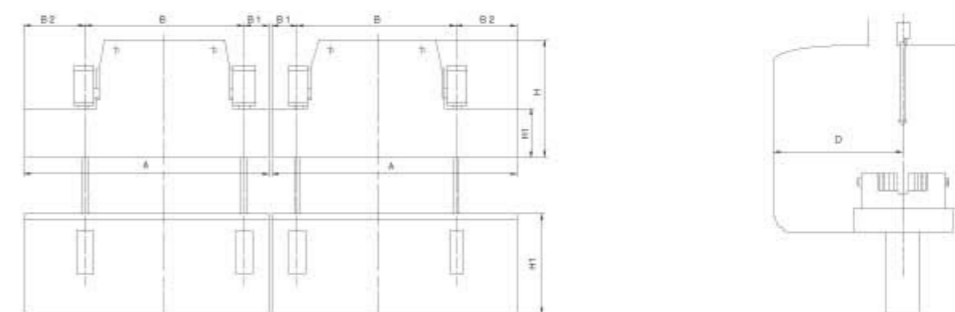
后推料
X type front feeding device

标准配置

- ▼ 荷兰DELEM DA56/瑞士CYBELEC DNC 880S
- ▼ 德国全闭环电液伺服同步控制系统
- ▼ 工作台机械自动挠度补偿
- ▼ 棱形上模、可调式槽型下模
- ▼ 前推料、后推料、侧出料装置

Standard configuration

- ▼ Adopt DELEM DA56 from the Netherlands, or Cybeclec 880S from Swiss
- ▼ Full loop electro-hydraulic servo synchronized control system from Germany
- ▼ Equip with mechanical crowning compensation device on worktable
- ▼ Prismatic top tooling, adjustable slotted bottom tooling
- ▼ Front feeding device, back pushing device, lateral discharging device



2-PBA双机联动钢管杆数控板料折弯机参数

Parameter of 2-PBA Andem CNC Steel Pole Pressbrake

型号 Specification	油缸中心距 B Center distance of oil cylinder	喉口深度 Throat depth	滑块行程 Ram stroke	最大开启高度 Max day light	下模最大开口 Max die open	工作台宽度 worktable width	滑块速度 Ram speed			电机功率 Power of motor	不掉头折弯单缝管对边距 Across flat of bending angle slit tube without turning around		不掉头折弯双缝管对边距 Across flat of bending double slit tube without turning around		调头折弯双缝管对边距 Across flat of bending double slit tube with turning around		重量 Weight
							mm/s	mm	mm		mm	mm	mm	mm	mm		
																8边形 Octagon	
2-PBA-7'	mm	mm	mm	mm	mm	mm	mm/s	mm	kw	mm	mm	mm	mm	mm	mm	Kg	
500/6000	4500	1000	315	1100	280	500	100	9	90	2×37	500	480	900	850	1380	1540	138000
500/7000	5200		1100	315	1200	280	500	100	9	90	2×45	560	550	1030	950	1550	1720
630/6000	4500	1100	315	1200	280	500	100	9	90	2×45	560	550	1030	950	1550	1720	152000
630/7000	5200		1100	315	1200	280	500	100	9	90	2×45	560	550	1030	950	1550	1720
800/6000	4500	1100	410	1200	280	500	100	9	90	2×75	560	550	1030	950	1550	1720	176000
800/7000	5200		1100	410	1200	280	500	100	9	90	2×75	560	550	1030	950	1550	1720
800/8000	6000	1600	410	1250	320	600	100	9	90	2×90	815	805	1500	1380	2260	2240	206000
1000/7000	5200		1600	410	1250	320	600	100	9	90	2×90	815	805	1500	1380	2260	2240
1000/8000	6000	1600	410	1250	320	600	90	8	80	2×90	815	805	1500	1380	2260	2240	276000
1200/7000	5200	1600	410	1250	320	600	90	8	80	2×90	815	805	1500	1380	2260	2240	280000
1200/8000	6000		1600	410	1250	320	600	90	8	80	2×90	815	805	1500	1380	2260	2240
1600/7000	4500	1600	410	1600	320	600	70	7	70	4×55	815	805	1500	1380	2260	2510	400000
1600/8000	5200		1600	410	1600	320	600	70	7	70	4×55	815	805	1500	1380	2260	2510
2000/8000	5200	1600	410	1600	320	600	70	6	70	4×55	815	805	1500	1380	2260	2510	500000

采用不对称结构设计，适合钢管杆“厚板不长，长板不厚”的特点，可换式上模和可调式下模，满足各种钢管杆加工需求。

Adopt asymmetrical structure design, suitable for the feature of steel pole "the thick plate is not long, the long plate is not thick"; changable upper tool and adjustable bottom tool, satifying manufacturing requirement of various steel pole

可专门设计制造特殊参数规格的产品
We can design and manufacture production of special order